

FD-90-15-gx



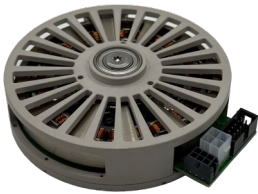
- Phase Resistance: 0.47 [Ω]
- Torque constant: (g6: 1.9[Nm/A], g7: 2.3[Nm/A], g9: 2.9[Nm/A])
- Nominal Torque: (g6: 13[Nm], g7: 16[Nm], g9: 20[Nm])
- Weight: 660[g]
- Torque Density: (g6: 19[Nm/kg], g7: 24[Nm/kg], g9: 30[Nm/kg])
- Voltage: 48[V] (g6: 240[RPM], g7: 190[RPM], g9: 150[RPM])
- Power: 320[W](@48[V])

FD-90-15-gx (병렬 권선)

- Phase Resistance: 0.12[Ω]
- Torque constant: (g6: 960[mNm/A], g7: 1160[mNm/A], g9: 1490[mNm/A])
- Nominal Torque: (g6: 13[Nm], g7: 16[Nm], g9: 20[Nm])
- Weight: 660[g]
- Torque Density: (g6: 19[Nm/kg], g7: 24[Nm/kg], g9: 30[Nm/kg])
- Voltage: 48[V] (g6: 420[RPM], g7: 350[RPM], g9: 270[RPM])
- Power: 550[W](@48[V])



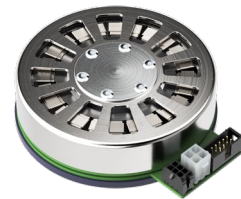
FD-90-07-gx



- Phase Resistance: 0.29 [Ω]
- Torque constant: (g6: 840[mNm/A], g7: 1015[mNm/A], g9: 1300[mNm/A])
- Nominal Torque: (g6: 5.8[Nm], g7: 7.1[Nm], g9: 9.1[Nm])
- Weight: 450[g]
- Torque Density: (g6: 12.8[Nm/kg], g7: 15.7[Nm/kg], g9: 20.2[Nm/kg])
- Voltage: 48[V] (g6: 540[RPM], g7: 460[RPM], g9: 360[RPM])
- Power: 320[W](@48[V])

FD-90-15-f

- Phase Resistance: 0.38[Ω]
- Torque constant: 640[mNm/A]
- Nominal Torque: 3.45[Nm]
- Weight: 650[g] (Frameless : 550[g])
- Torque Density: 5.31[Nm/kg] (Frameless : 6.27[Nm/kg])
- Voltage: 24[V] (640[RPM]), 48[V] (1280[RPM])
- Power: 110[W](@24[V]), 220[W](@48[V])



FD-90-15-A



- Phase Resistance: 0.47 [Ω]
- Torque constant: 320[mNm/A]
- Nominal Torque: 2.2[Nm]
- Weight: 540[g] (Frameless : 440[g])
- Torque Density: 4.0[Nm/kg] (Frameless : 5.0[Nm/kg])
- Voltage: 24[V] (700[RPM]), 48[V] (1400[RPM])
- Power: 140[W](@24[V]), 280[W](@48[V])

FD-90-15-B (병렬 권선)

- Phase Resistance: 0.12[Ω]
- Torque constant: 160[mNm/A]
- Nominal Torque: 2.2[Nm]
- Weight: 540[g] (Frameless : 440[g])
- Torque Density: 4.0[Nm/kg] (Frameless : 5.0[Nm/kg])
- Voltage: 24[V] (1400[RPM]), 48[V] (2800[RPM])
- Power: 300[W](@24[V]), 600[W](@48[V])



FD-75-23



- Phase Resistance: 0.70 [Ω]
- Torque constant: 450[mNm/A]
- Nominal Torque: 2500[mNm]
- Weight: 560[g] (Frameless : 480[g])
- Torque Density: 4.4[Nm/kg] (Frameless : 5.2[Nm/kg])
- Voltage: 48[V] (1000[RPM])
- Power: 120[W](@24[V]), 240[W](@48[V])

FD-60-25-f



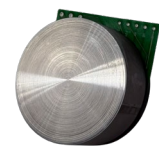
- Phase Resistance: 0.42 [Ω]
- Torque constant: 240[mNm/A]
- Nominal Torque: 1320[mNm]
- Weight: 490[g] (Frameless : 420[g])
- Torque Density: 2.69[Nm/kg] (Frameless : 3.14[Nm/kg])
- Voltage: 24[V] (920[RPM]), 48[V] (1840[RPM])
- Power: 120[W](@24[V]), 240[W](@48[V])

FD-60-15-f



- Phase Resistance: 0.38[Ω]
- Torque constant: 120[mNm/A]
- Nominal Torque: 720[mNm]
- Weight: 315[g] (Frameless : 250[g])
- Torque Density: 2.28[Nm/kg] (Frameless : 2.88[Nm/kg])
- Voltage: 24[V] (1540[RPM]), 48[V] (3080[RPM])
- Power: 120[W](@24[V]), 240[W](@48[V])

FD-42-15-f



- Phase Resistance: 2.0 [Ω]
- Torque constant: 135[mNm/A]
- Nominal Torque: 270[mNm]
- Weight: 120[g]
- Torque Density: 2.25[Nm/kg]
- Voltage: 24[V] (1650[RPM])
- Power: 45[W](@24[V])

FD-18-6-f



- Phase Resistance: 0.9 [Ω]
- Torque constant: 10[mNm/A]
- Nominal Torque: 20[mNm]
- Weight: 13[g]
- Torque Density: 1.54[Nm/kg]
- Voltage: 12[V] (11850[RPM])
- Power: 20[W](@12[V])

HIGH TORQUE
DENSITY

LOW
PULSATION

LOW COGGING TORQUE

LOW FRICTION

